

# FlowSave®

## Continuous Loss-In-Weight Gravimetric Blender



**LIAD**

Weighing and Control Systems Ltd.

**Innovation**  
*In Every Dose*

**FlowSave** fulfills the extrusion sector's demands for accurate and homogenous dosing and constant blending. It provides extremely precise loss-in-weight blending and feeding of various size and bulk density materials such as pellets, regrind and powder.

**FlowSave** covers a wide production range of up to 1500 kg/h, and can feed up to 5 materials. Separate load cells for each component allow constant monitoring for each component flow. If there are any changes in properties, e.g. bulk density, pellet size, etc., the FlowSave automatically adjusts individual feeders to match the extruder rate at the exact required ratio, without affecting the accuracy of the blended material. This ensures a constant blending ratio according to the recipe at all times.

### **FlowSave Advantages:**

- Compact design and low space requirements
- High precision
- Optimal homogeneous mixing of the dosed materials
- High dosing repeatability
- Easy and quick cleaning when changing recipe
- Various size and bulk density materials

### **Optional Gram/meter Monitoring**

Using a shaft encoder, the FlowSave can monitor the throughput in terms of gram/meter.

By continuously measuring the material flow (kg/h) by means of a loss-in-weight method, and by monitoring the product speed (m/sec), the FlowSave translates the throughput to terms of gram/meter.

Gram/meter monitoring allows easy monitoring for the operator.

### **Design**

The FlowSave design guarantees a totally homogeneous blend.

The frame protects the dosing stations from the extruder's movements and vibration.

The system is completely modular. Feeders can be exchanged or removed as needed.

### **Precision**

The material flow is monitored continuously, and the controller automatically regulates the rotation speed of the dosing screws. This ensures a precise homogenous blend of materials. Its high resolution weighing system allows precise low-rate additive feeding.

### **Savings**

You can achieve maximum savings with the FlowSave. The final product shows a considerably lower fluctuation range, minimizing the usage of costly materials and reducing waste and start-up scrap. You can lower the additive percentage during operation, which also represents a significant saving.

### **Optional Extruder / Haul-off Control**

The FlowSave's controller can supply a continuous control signal to the extruder's and/or haul-off's controller, which controls the extruder and/or haul-off rpm to ensure the required pre-set throughput or density. The FlowSave changes the extruder's and/or haul-off's speed to meet the desired throughput or density, and simultaneously adjusts the screw speed of each component to ensure constant ratio of the material at all times.

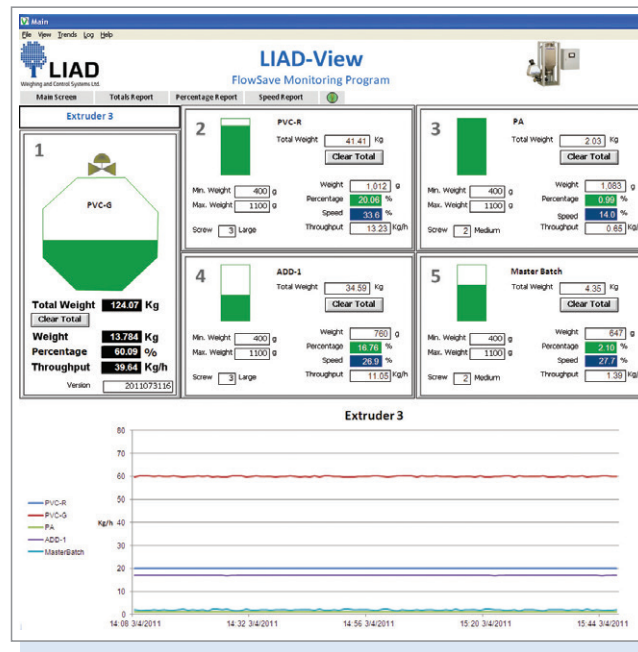
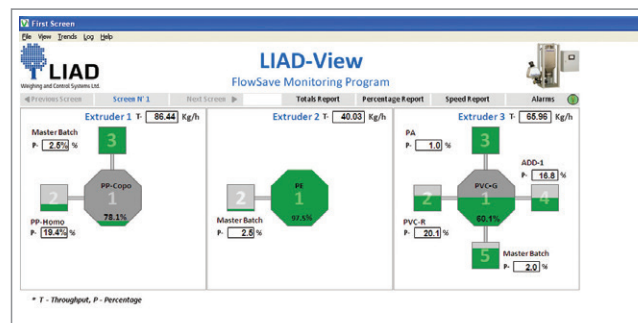
## FlowSave Features

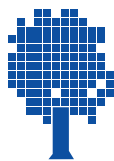
- Multiple recipes
- Designed for extrusion rates up to 1,500 kg/hr
- Flexible configuration permits the installation of up to 5 dosing stations
- Changeable dosing screws for different throughput ranges (from 0.02 up to 250 kg/h) for each material
- Works perfectly with either flood feed or starve feed extruders

## LIAD-View

A monitoring program for the FlowSave range of feeders. You can utilize LIAD-View to:

- See in one single screen the working statuses of all the FlowSave feeders
- View historic graphs of each feeder
- See all the parameters of each feeder, such as percentage of each material, etc.
- Update the working parameters directly to the feeders
- Generate historic reports, such as total weight, actual percentage, etc.





**LIAD**

Weighing and Control Systems Ltd.

Tel: +972-4-9028800 • Fax: +972-4-9028818 • e-mail: [prod@liad.co.il](mailto:prod@liad.co.il)  
POB 10, Sky St., Misgav Industrial Park 2017400 Israel

[www.liad.co.il](http://www.liad.co.il)